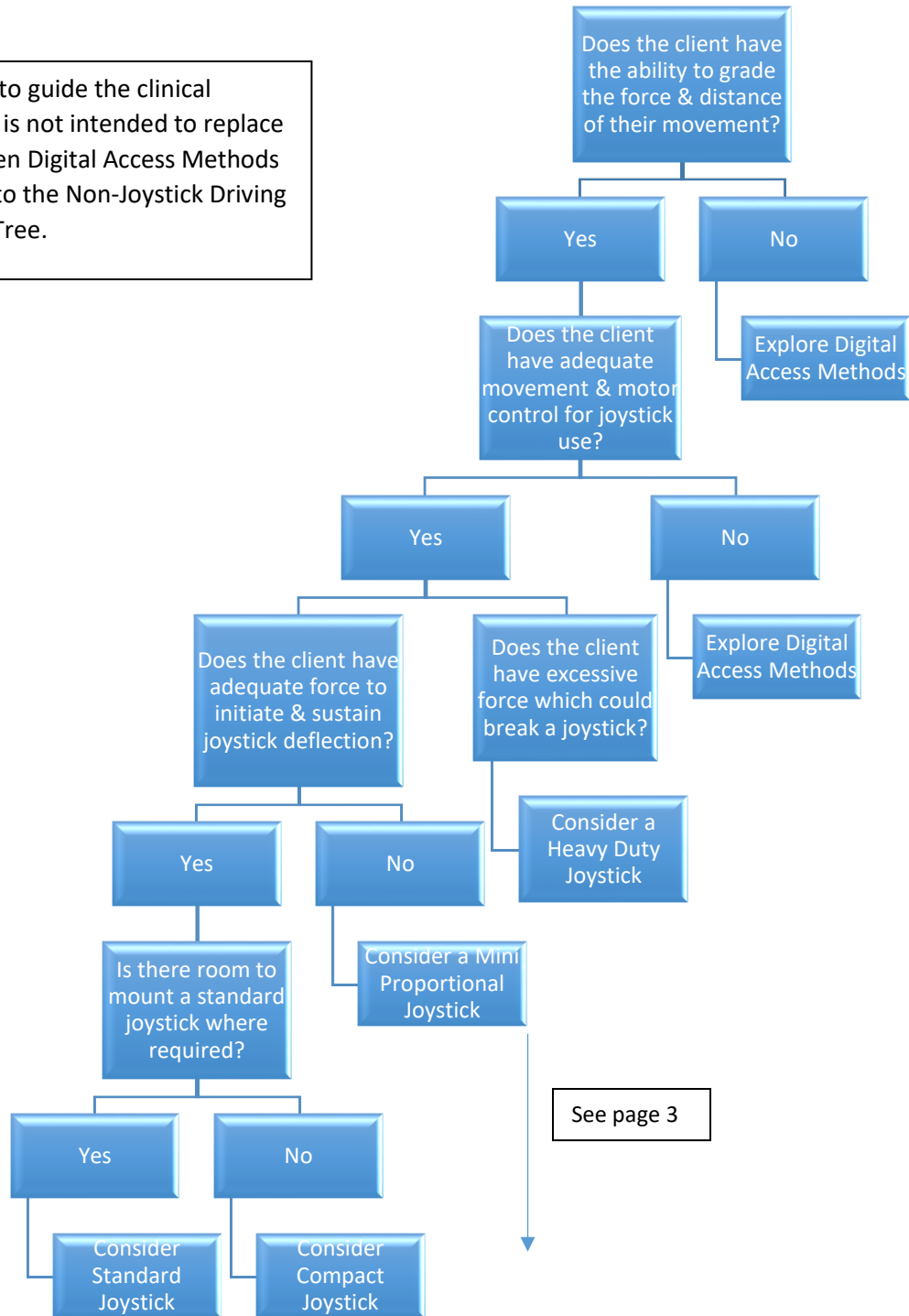


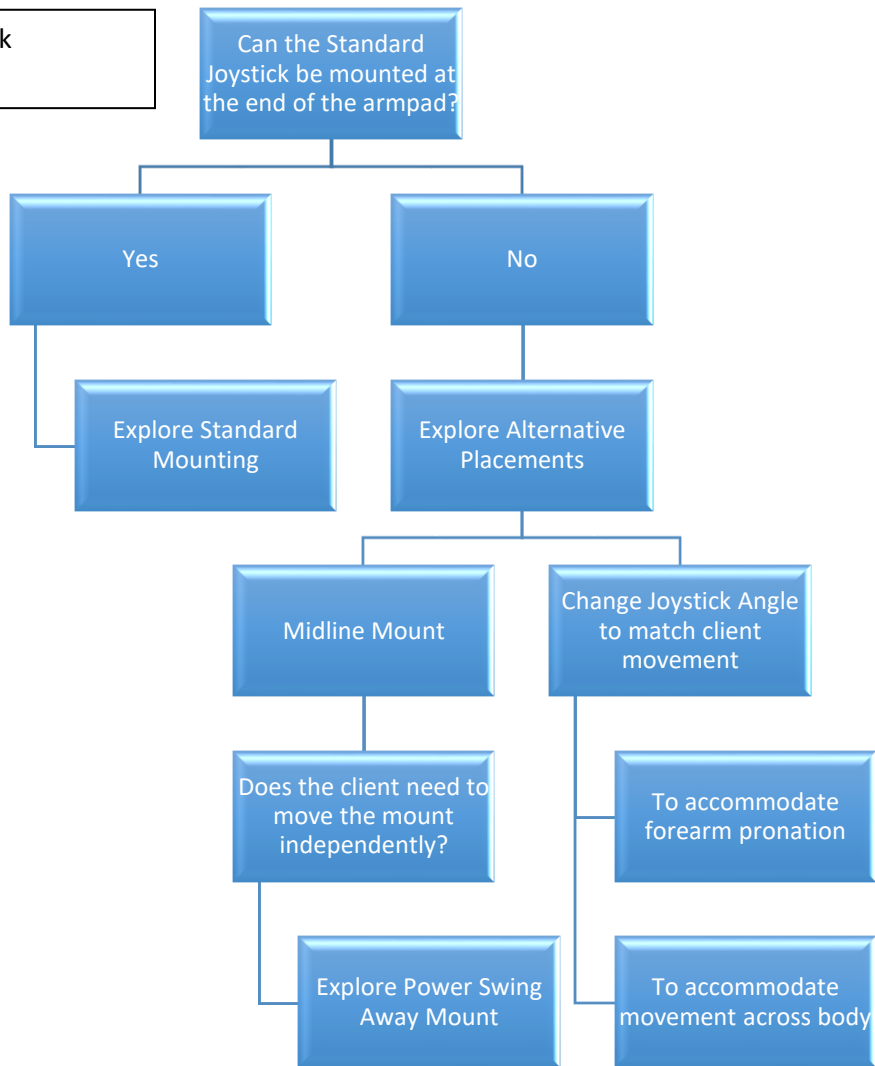
## Power Wheelchair Joystick Decision Making Tree

This decision tree is meant to guide the clinical decision-making process. It is not intended to replace competent evaluation. When Digital Access Methods are indicated, please refer to the Non-Joystick Driving Methods Decision Making Tree.



# Power Wheelchair Joystick Decision Making Tree

Standard Joystick considerations



Does the client have difficulty using a joystick by the hand during cold conditions?

Explore a hand warmer

Does the client have difficulty using a standard joystick handle?

Explore alternative handles

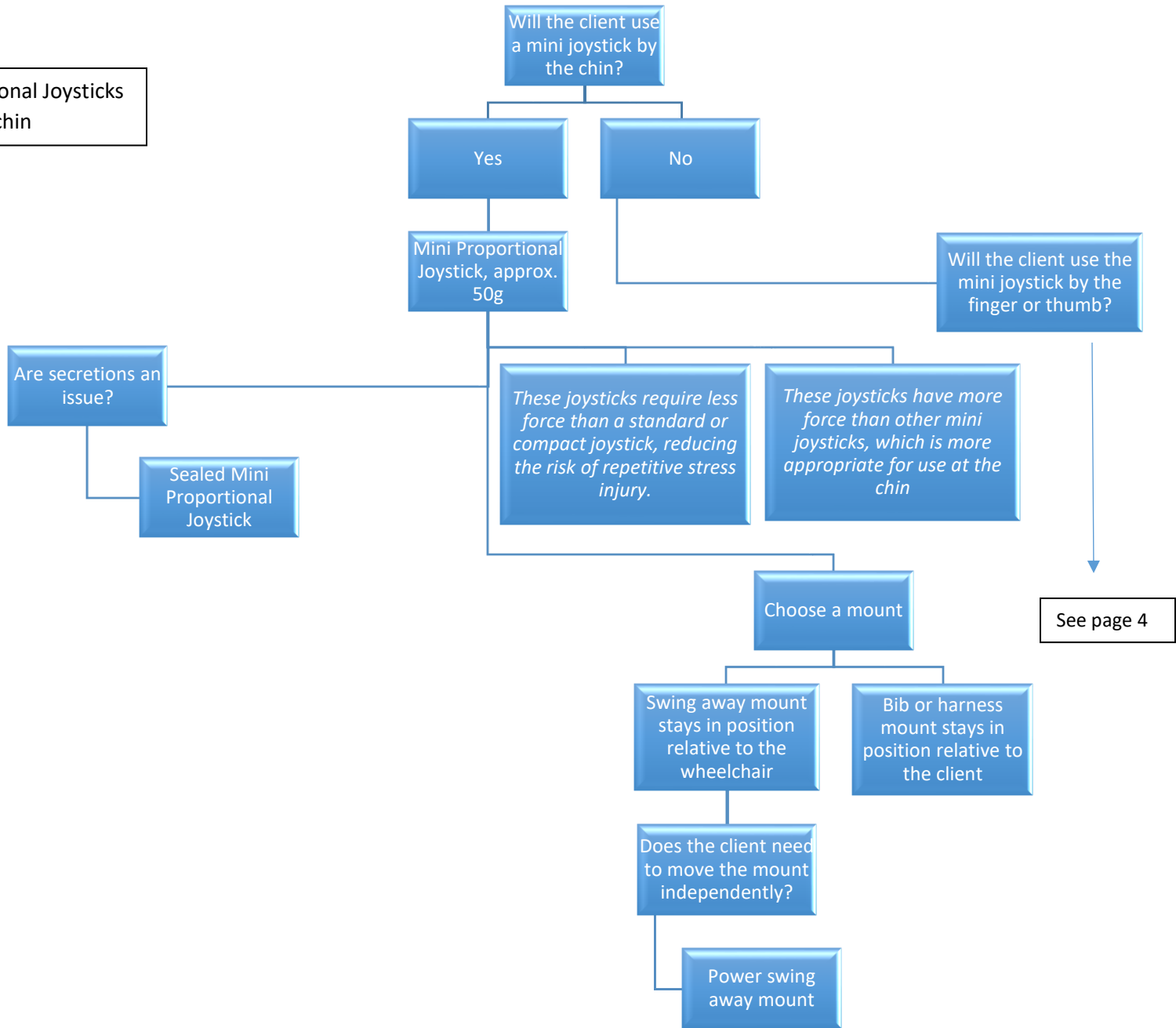
Does the client have poor grasp?

Explore Goal Post or Dome shaped handle

Explore Mushroom Joystick

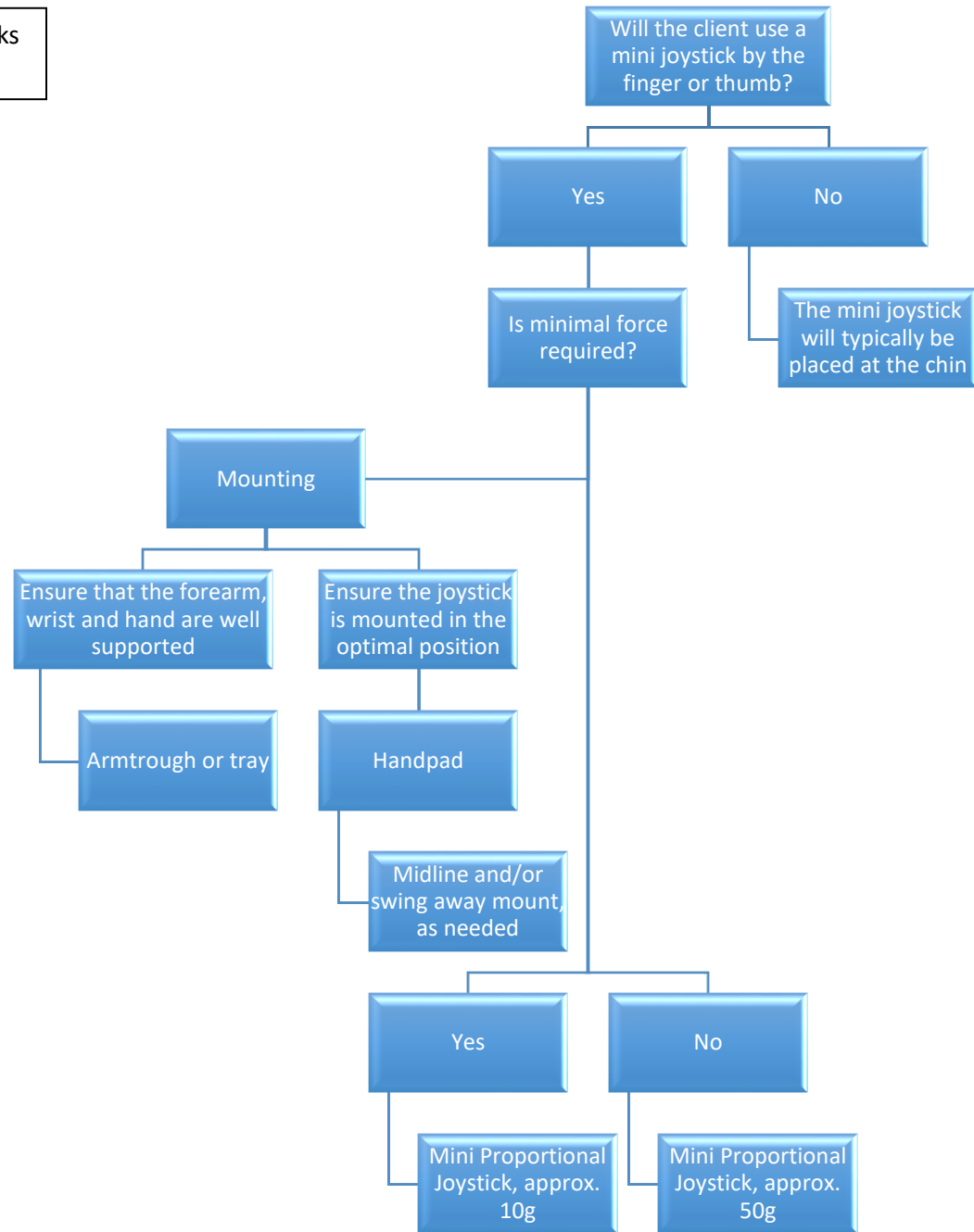
# Power Wheelchair Joystick Decision Making Tree

Mini Proportional Joysticks Mounted by chin

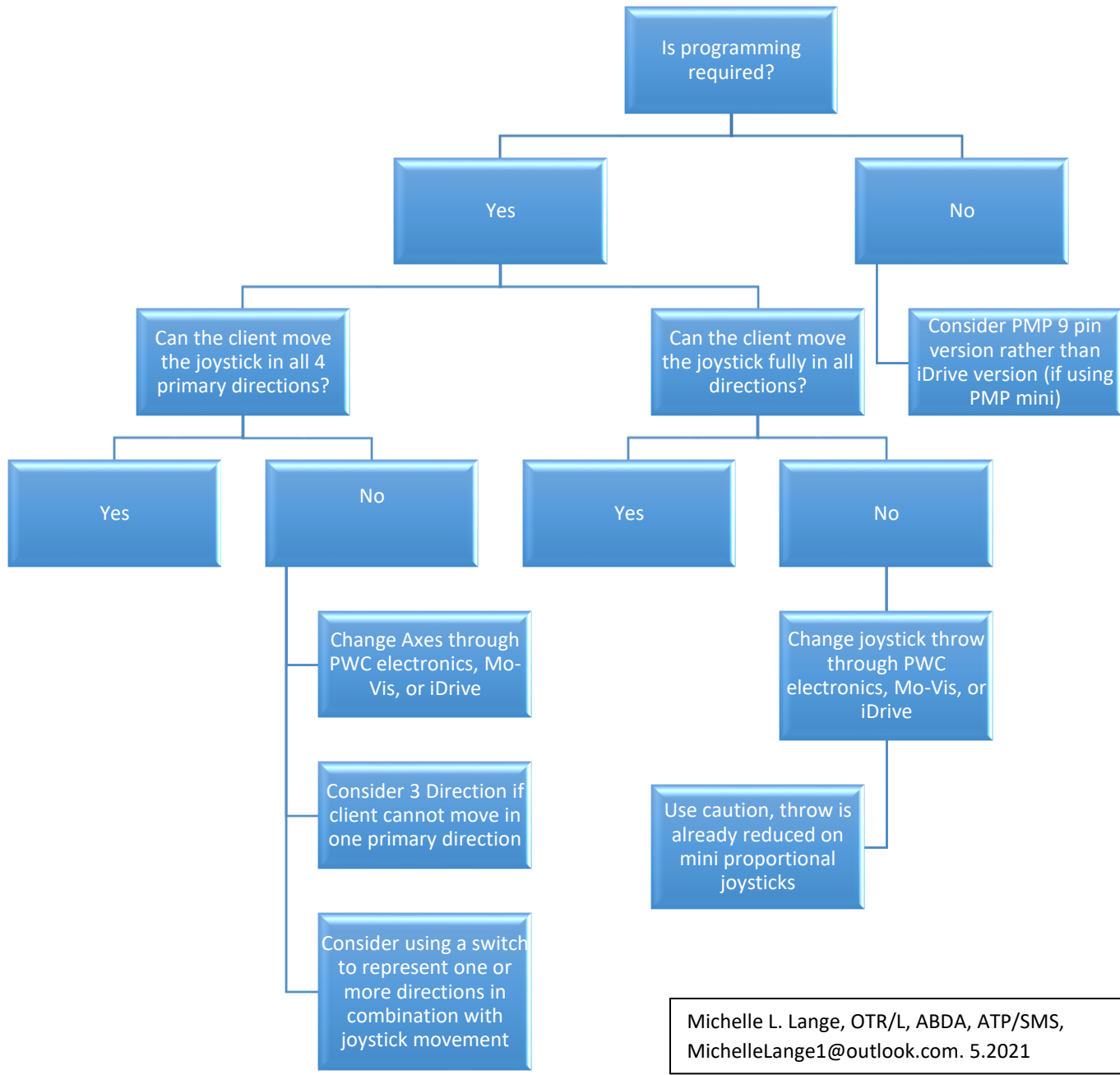


# Power Wheelchair Joystick Decision Making Tree

Mini Proportional Joysticks  
Mounted by hand



# Power Wheelchair Joystick Decision Making Tree



Michelle L. Lange, OTR/L, ABDA, ATP/SMS,  
 MichelleLange1@outlook.com. 5.2021